

PE Anti-Mouse Ly-6G Monoclonal Antibody



天津三箭生物技术股份有限公司
Tianjin Sungene Biotech Co., Ltd.
精准 高效 稳定 Precision Efficient Stable

Catalog Number	Vial Size
M100L8-09B	50 µg
M100L8-09D	200 µg

Market | 400-621-0003
marketing@sungenebiotech.com

Support | 022-66211636-8024
techsupport@sungenebiotech.com

Web | www.sungenebiotech.com

Important Note: Centrifuge before opening to ensure complete recovery of vial contents.
This product is guaranteed up to one year from purchase.

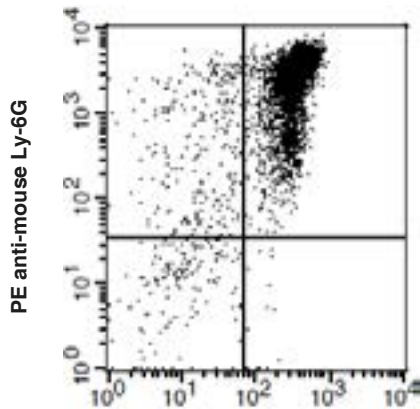
Purified Antibody Characterization

Clone	Isotype	Reactivity
1A8	Rat IgG2a	Mouse

Description

The 1A8 antibody reacts with Ly-6G, a 21-25-kDa GPI-anchored protein. In the bone marrow, Ly-6G is expressed on the majority of the largest cells, which are predominantly granulocytes, and not on lymphoid or erythroid cells. In the periphery, it is expressed on granulocytes.

Illustration of Immunofluorescent Staining



FITC anti-mouse CD11b

C57BL/6 mouse granulocyte of bone marrow stained with FITC anti-mouse CD11b and PE anti-mouse Ly-6G

Product Information

Conjugation: PE

Formulation: PBS pH 7.2, 0.09% NaN₃, 0.2% BSA

Concentration: 0.2mg/ml

Storage: Keep as concentrated solution. Store at 4°C and protected from prolonged exposure to light. **Do not freeze.**

Application: Recommended Application: FC

Usage: Each lot of this antibody is quality control tested by immunofluorescent staining with flow cytometric analysis (The amount of the reagent is suggested to be used ≤ 0.25 µg /10⁶ cells in 100 µl). Since applications vary, the appropriate dilutions must be determined for individual use.

References

[1] Fleming TJ, et al. 1993. J. Immunol. 151:2399.

For Research Use Only.